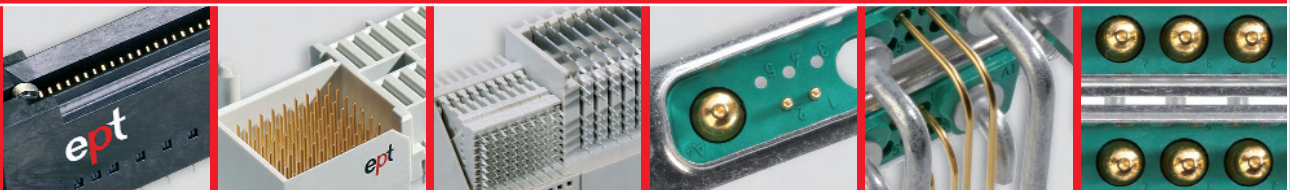


MicroTCA™ Power Input
board mounted connectors



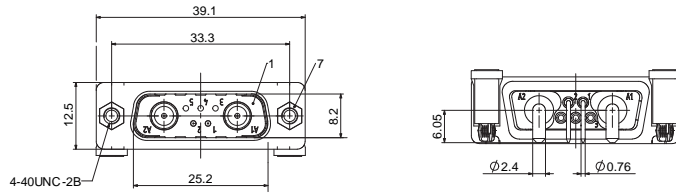
ept - your connector solution

MicroTCA™ Power Input

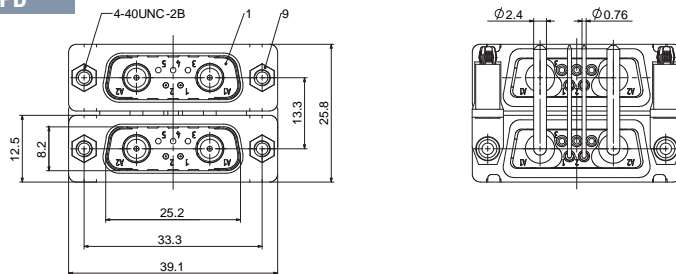
board mounted connectors



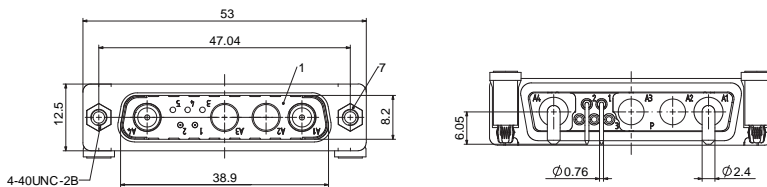
7W2 PS



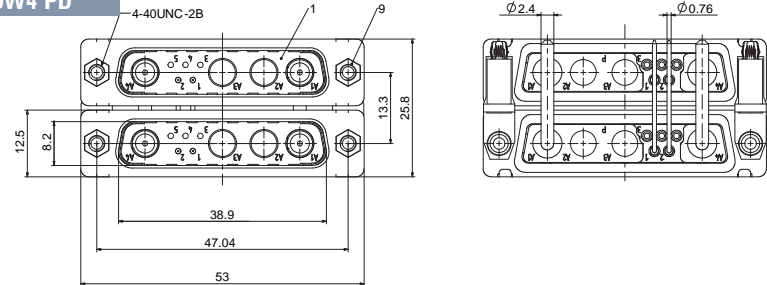
7W2 PD



9W4 PS



9W4 PD



The latest extension of the ept MicroTCA™ product range:

the MicroTCA™ Power Input board mounted connectors.

For 24/48/60 V systems, according to PICMG MTCA.0 specification:

- 7W2 PS single-port Power Input Connector
- 7W2 PD dual-port Power Input Connector
- 9W4 PS single-port Power Input Connector
- 9W4 PD dual-port Power Input Connector

For 12V systems in ruggedized applications according to the planned Rugged MicroTCA™ specification:

- 5W5 PS single-port Power Input Connector
- 5W5 PD dual-port Power Input Connector
- 15W4 PS single-port Power Input Connector
- 15W4 dual-port Power Input Connector

The MicroTCA™ board mounted connectors were designed for wave soldering or THR processing.

Filter versions are available on request.

Electrical Data

	7W2	9W4	5W5	15W4
Current rating according IEC 60512	19,2 A / 48 V	39,2 A / 24 V	40 A / 12 V	40 A / 12 V
Test voltage between 2 contacts or shell and contact	1000 V, 50 Hz, 1 min.	1000 V, 50 Hz, 1 min.	1000 V, 50 Hz, 1 min.	1000 V, 50 Hz, 1 min.
Resistance between mated contacts	≤ 2,7 mΩ	≤ 2,7 mΩ	≤ 2,7 mΩ	≤ 2,7 mΩ
Insulation resistance between contacts	≥ 5 000 MΩ	≥ 5 000 MΩ	≥ 5 000 MΩ	≥ 5 000 MΩ
Volume resistivity	10 ¹⁶ Ω cm	10 ¹⁶ Ω cm	10 ¹⁶ Ω cm	10 ¹⁶ Ω cm
Dielectric strength	50 kV / mm	50 kV / mm	50 kV / mm	50 kV / mm